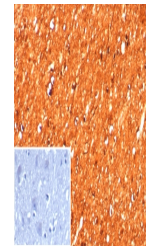


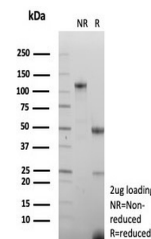
Product Datasheet

CKB Antibody / Creatine kinase B (orb1825452)

Description	Creatine kinases (CK) are a large family of isoenzymes that regulate levels of ATP in subcellular co...
Species/Host	Rabbit
Reactivity	Human
Conjugation	Unconjugated
Tested Applications	IHC-P
Immunogen	Recombinant human full-length protein was used as the immunogen for the Creatine kinase B antibody.
Storage	Aliquot the Creatine kinase B antibody and store frozen at -20°C or colder. Avoid repeated freeze-thaw cycles.
Note	For research use only
Formula	0.2 mg/ml in 1X PBS with 0.1 mg/ml BSA (US sourced), 0.05% sodium azide
Isotype	Rabbit IgG, kappa
Clonality	Recombinant
Uniprot ID	P12277
Hazard Information	This Creatine kinase B antibody is available for research use only.
Dilution Range	Immunohistochemistry (FFPE): 1-2ug/ml for 30 minutes at RT
Expiration Date	12 months from date of receipt.



IHC staining of FFPE human brain tissue ...



SDS-PAGE analysis of purified, BSA-free ...