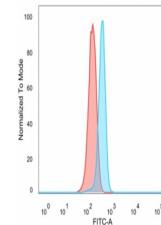


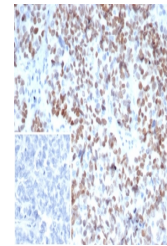
Product Datasheet

MEIS2 Antibody (orb1825438)

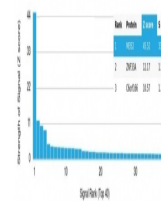
Description	This gene encodes a homeobox protein belonging to the TALE ('three amino acid loop extension') famil...
Species/Host	Mouse
Reactivity	Human
Conjugation	Unconjugated
Tested Applications	FACS, IHC-P, WB
Immunogen	A recombinant fragment of human MEIS2 protein was used as the immunogen for the MEIS2 antibody.
Storage	Aliquot the MEIS2 antibody and store frozen at -20°C or colder. Avoid repeated freeze-thaw cycles.
Note	For research use only
Formula	0.2 mg/ml in 1X PBS with 0.1 mg/ml BSA (US sourced), 0.05% sodium azide
Isotype	Mouse IgG2a, kappa
Clonality	Monoclonal
Uniprot ID	O14770
Hazard Information	This MEIS2 antibody is available for research use only.
Dilution Range	Flow cytometry: 1-2ug/million cells,Western blot: 1-2ug/ml,Immunohistochemistry (FFPE): 1-2ug/ml for 30 minutes at RT
Expiration Date	12 months from date of receipt.



Flow cytometry testing of PFA-fixed huma...



IHC staining of FFPE human ovarian carci...



Analysis of a HuProt (TM) microarray con...