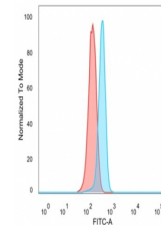


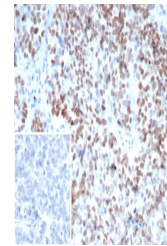
## Product Datasheet

### MEIS2 Antibody (orb1825437)

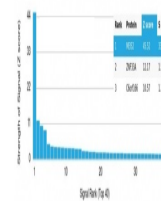
<b>Description</b>	This gene encodes a homeobox protein belonging to the TALE ('three amino acid loop extension') famil...
<b>Species/Host</b>	Mouse
<b>Reactivity</b>	Human
<b>Conjugation</b>	Unconjugated
<b>Tested Applications</b>	FACS, IHC-P, WB
<b>Immunogen</b>	A recombinant fragment of human MEIS2 protein was used as the immunogen for the MEIS2 antibody.
<b>Storage</b>	Aliquot the MEIS2 antibody and store frozen at -20°C or colder. Avoid repeated freeze-thaw cycles.
<b>Note</b>	For research use only
<b>Formula</b>	0.2 mg/ml in 1X PBS with 0.1 mg/ml BSA (US sourced), 0.05% sodium azide
<b>Isotype</b>	Mouse IgG2a, kappa
<b>Clonality</b>	Monoclonal
<b>Uniprot ID</b>	<b>O14770</b>
<b>Hazard Information</b>	This MEIS2 antibody is available for research use only.
<b>Dilution Range</b>	Flow cytometry: 1-2ug/million cells,Western blot: 1-2ug/ml,Immunohistochemistry (FFPE): 1-2ug/ml for 30 minutes at RT
<b>Expiration Date</b>	12 months from date of receipt.



Flow cytometry testing of PFA-fixed huma...



IHC staining of FFPE human ovarian carci...



Analysis of a HuProt (TM) microarray con...