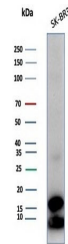


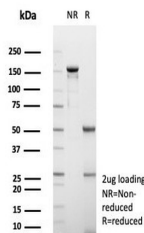
Product Datasheet

GCHFR Antibody / GFRP (orb1825428)

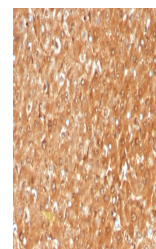
Description	GTP cyclohydrolase I feedback regulatory protein (GFRP) is encoded by the gene GCHFR. GFRP mediates ...
Species/Host	Mouse
Reactivity	Human
Conjugation	Unconjugated
Tested Applications	IHC-P, WB
Immunogen	A recombinant fragment of human GCHFR protein was used as the immunogen for the GCHFR antibody.
Storage	Aliquot the GCHFR antibody and store frozen at -20°C or colder. Avoid repeated freeze-thaw cycles.
Note	For research use only
Formula	0.2 mg/ml in 1X PBS with 0.1 mg/ml BSA (US sourced), 0.05% sodium azide
Isotype	Mouse IgG2, kappa
Clonality	Monoclonal
Uniprot ID	P30047
Hazard Information	This GCHFR antibody is available for research use only.
Dilution Range	Western blot: 1-2ug/ml, Immunohistochemistry (FFPE): 1-2ug/ml for 30 minutes at RT
Expiration Date	12 months from date of receipt.



Western blot testing of human SK-BR-3 ce...



SDS-PAGE analysis of purified, BSA-free ...



IHC staining of FFPE human liver tissue ...