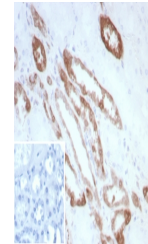


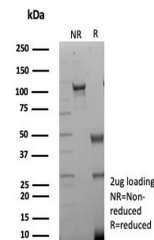
Product Datasheet

CKB Antibody / Creatine kinase B (orb1825412)

| | |
|----------------------------|--|
| Description | Creatine kinases (CK) are a large family of isoenzymes that regulate levels of ATP in subcellular co... |
| Species/Host | Rabbit |
| Reactivity | Human |
| Conjugation | Unconjugated |
| Tested Applications | IHC-P |
| Immunogen | Recombinant human full-length protein was used as the immunogen for the Creatine kinase B antibody. |
| Storage | Aliquot the Creatine kinase B antibody and store frozen at -20°C or colder. Avoid repeated freeze-thaw cycles. |
| Note | For research use only |
| Formula | 1 mg/ml in 1X PBS; BSA free, sodium azide free |
| Isotype | Rabbit IgG, kappa |
| Clonality | Recombinant |
| Uniprot ID | P12277 |
| Hazard Information | This Creatine kinase B antibody is available for research use only. |
| Dilution Range | Immunohistochemistry (FFPE): 1-2ug/ml for 30 minutes at RT |
| Expiration Date | 12 months from date of receipt. |



IHC staining of FFPE human kidney tissue...



SDS-PAGE analysis of purified, BSA-free ...