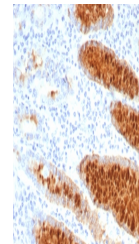


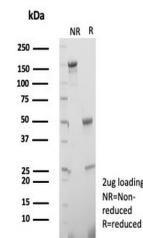
Product Datasheet

Estrogen Inducible Protein pS2 / TFF1 Antibody (orb1825382)

| | |
|----------------------------|--|
| Description | It recognizes a polypeptide of 6.5kDa, identified as pS2 estrogen-regulated protein. Its epitope is ... |
| Species/Host | Mouse |
| Reactivity | Human |
| Conjugation | Unconjugated |
| Tested Applications | IHC-P |
| Immunogen | A recombinant partial protein sequence (within amino acids 1-84) from the human protein was used as the immunogen for the Estrogen Inducible Protein pS2 antibody. |
| Storage | Aliquot the Estrogen Inducible Protein pS2 antibody and store frozen at -20°C or colder. Avoid repeated freeze-thaw cycles. |
| Note | For research use only |
| Formula | 1 mg/ml in 1X PBS; BSA free, sodium azide free |
| Isotype | Mouse IgG1, kappa |
| Clonality | Monoclonal |
| Uniprot ID | P04155 |
| Hazard Information | This Estrogen Inducible Protein pS2 antibody is available for research use only. |
| Dilution Range | Immunohistochemistry (FFPE): 1-2ug/ml for 30 minutes at RT |
| Expiration Date | 12 months from date of receipt. |



IHC staining of FFPE human stomach tissue...



SDS-PAGE analysis of purified, BSA-free ...