

Product Datasheet

Glycoprotein 2 Antibody / GP2 / ZAP75 (orb1825377)

Description GP2 (glycoprotein 2), also known as ZAP75, is a 537 amino acid secreted protein. It is an integral m...

Species/Host Rabbit

Reactivity Human

Conjugation Unconjugated

Tested Applications IHC-P

Immunogen A recombinant fragment of human GP2 protein (within amino acids 35-179) was used as the immunogen for the Glycoprotein 2 antibody.

Storage Aliquot the Glycoprotein 2 antibody and store frozen at -20°C or colder. Avoid repeated freeze-thaw cycles.

Note For research use only

Formula 0.2 mg/ml in 1X PBS with 0.1 mg/ml BSA (US sourced), 0.05% sodium azide

Isotype Rabbit IgG, kappa

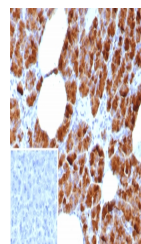
Clonality Recombinant

Uniprot ID [P55259](#)

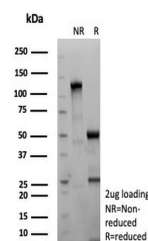
Hazard Information This Glycoprotein 2 antibody is available for research use only.

Dilution Range Immunohistochemistry (FFPE): 1-2ug/ml for 30 minutes at RT

Expiration Date 12 months from date of receipt.



IHC staining of FFPE human pancreas tiss...



SDS-PAGE analysis of purified, BSA-free ...