
Product Datasheet

Estrogen Inducible Protein pS2 / TFF1 Antibody (orb1825362)

Description

It recognizes a polypeptide of 6.5kDa, identified as


Species/Host

Rabbit

Reactivity

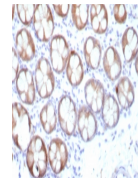
Human

Conjugation

Unconjugated

Tested Applications

IHC-P



IHC staining of FFPE human colon tissue

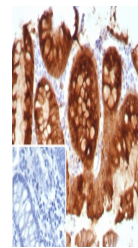
...

Immunogen

A recombinant partial protein sequence (within amino acids 1-84) from the human protein was used as the immunogen for the recombinant Estrogen Inducible Protein pS2 antibody.

Storage

Aliquot the recombinant Estrogen Inducible Protein pS2 antibody and store frozen at -20°C or colder. Avoid repeated freeze-thaw cycles.



IHC staining of FFPE human colon tissue

...

Note

For research use only

Formula

0.2 mg/ml in 1X PBS with 0.1 mg/ml BSA (US sourced), 0.05% sodium azide

Isotype

Rabbit IgG, kappa

Clonality

Recombinant

Uniprot ID

P04155

Hazard Information

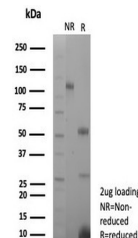
This recombinant Estrogen Inducible Protein pS2 antibody is available for research use only.

Dilution Range

Immunohistochemistry (FFPE): 1-2ug/ml for 30 minutes at RT

Expiration Date

12 months from date of receipt.



SDS-PAGE analysis of purified, BSA-free ...