
Product Datasheet

**Glycoprotein 2 Antibody / GP2 / ZAP75
(orb1825360)**

Description

GP2 (glycoprotein 2), also known as ZAP75, is a 537

Species/Host

Mouse

Reactivity

Human

Conjugation

Unconjugated

Tested Applications

ELISA, IHC-P, WB

Immunogen

A recombinant fragment of human protein (within amino acids 35-179) was used as the immunogen for the Glycoprotein 2 antibody.

Storage

Aliquot the Glycoprotein 2 antibody and store frozen at -20°C or colder. Avoid repeated freeze-thaw cycles.

Note

For research use only

Formula

0.2 mg/ml in 1X PBS with 0.1 mg/ml BSA (US sourced), 0.05% sodium azide

Isotype

Mouse IgG2c, kappa

Clonality

Monoclonal

Uniprot ID

P55259

Hazard Information

This Glycoprotein 2 antibody is available for research use only.

Dilution Range

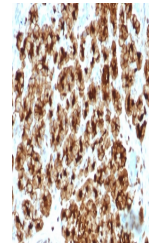
ELISA: 2-4mg/ml for coating (order BSA-free format), Western blot: 1-2ug/ml, Immunohistochemistry (FFPE): 1-2ug/ml for 30 minutes at RT

Expiration Date

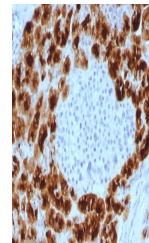
12 months from date of receipt.



Western blot testing of human pancreas t...



IHC staining of FFPE human pancreas tiss...



IHC staining of FFPE human pancreas tiss...