

---

## Product Datasheet

**Glycoprotein 2 Antibody / GP2 / ZAP75  
(orb1825359)**

**Description**

GP2 (glycoprotein 2), also known as ZAP75, is a 537

**Species/Host**

Mouse

**Reactivity**

Human

**Conjugation**

Unconjugated

**Tested Applications**

ELISA, IHC-P, WB

**Immunogen**

A recombinant fragment of human protein (within amino acids 35-179) was used as the immunogen for the Glycoprotein 2 antibody.

**Storage**

Aliquot the Glycoprotein 2 antibody and store frozen at -20°C or colder. Avoid repeated freeze-thaw cycles.

**Note**

For research use only

**Formula**

0.2 mg/ml in 1X PBS with 0.1 mg/ml BSA (US sourced), 0.05% sodium azide

**Isotype**

Mouse IgG2c, kappa

**Clonality**

Monoclonal

**Uniprot ID**

**P55259**

**Hazard Information**

This Glycoprotein 2 antibody is available for research use only.

**Dilution Range**

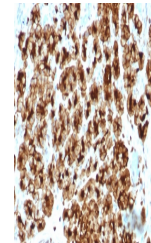
ELISA: 2-4mg/ml for coating (order BSA-free format), Western blot: 1-2ug/ml, Immunohistochemistry (FFPE): 1-2ug/ml for 30 minutes at RT

**Expiration Date**

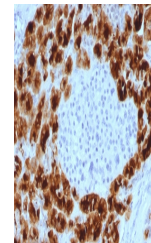
12 months from date of receipt.



Western blot testing of human pancreas t...



IHC staining of FFPE human pancreas tiss...



IHC staining of FFPE human pancreas tiss...