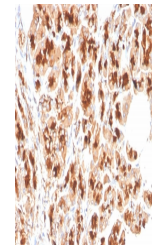


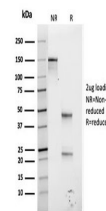
Product Datasheet

Glycoprotein 2 Antibody / GP2 / ZAP75 (orb1825358)

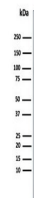
Description	GP2 (glycoprotein 2), also known as ZAP75, is a 537 amino acid secreted protein. It is an integral m...
Species/Host	Mouse
Reactivity	Human
Conjugation	Unconjugated
Tested Applications	ELISA, IHC-P, WB
Immunogen	A recombinant fragment of human protein (within amino acids 35-179) was used as the immunogen for the Glycoprotein 2 antibody.
Storage	Aliquot the Glycoprotein 2 antibody and store frozen at -20°C or colder. Avoid repeated freeze-thaw cycles.
Note	For research use only
Formula	1 mg/ml in 1X PBS; BSA free, sodium azide free
Isotype	Mouse IgG2c, kappa
Clonality	Monoclonal
Uniprot ID	P55259
Hazard Information	This Glycoprotein 2 antibody is available for research use only.
Dilution Range	ELISA: 2-4mg/ml for coating (order BSA-free format),Western blot: 1-2ug/ml,Immunohistochemistry (FFPE): 1-2ug/ml for 30 minutes at RT
Expiration Date	12 months from date of receipt.



IHC staining of FFPE human pancreas tiss...



SDS-PAGE analysis of purified, BSA-free ...



Western blot testing of human pancreas t...