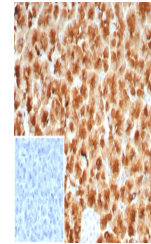


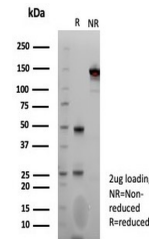
## Product Datasheet

# Glycoprotein 2 Antibody / GP2 / ZAP75 (orb1825357)

<b>Description</b>	GP2 (glycoprotein 2), also known as ZAP75, is a 537 amino acid secreted protein. It is an integral m...
<b>Species/Host</b>	Mouse
<b>Reactivity</b>	Human
<b>Conjugation</b>	Unconjugated
<b>Tested Applications</b>	ELISA, IHC-P, WB
<b>Immunogen</b>	A recombinant fragment of human protein (within amino acids 35-179) was used as the immunogen for the recombinant GP2 antibody.
<b>Storage</b>	Aliquot the recombinant GP2 antibody and store frozen at -20°C or colder. Avoid repeated freeze-thaw cycles.
<b>Note</b>	For research use only
<b>Formula</b>	0.2 mg/ml in 1X PBS with 0.1 mg/ml BSA (US sourced), 0.05% sodium azide
<b>Isotype</b>	Mouse IgG1, kappa
<b>Clonality</b>	Recombinant
<b>Uniprot ID</b>	<b>P55259</b>
<b>Hazard Information</b>	This recombinant GP2 antibody is available for research use only.
<b>Dilution Range</b>	ELISA: 2-4mg/ml for coating (order BSA-free format),Western blot: 1-2ug/ml,Immunohistochemistry (FFPE): 1-2ug/ml for 30 minutes at RT
<b>Expiration Date</b>	12 months from date of receipt.



IHC staining of FFPE human pancreas tiss...



SDS-PAGE analysis of purified, BSA-free ...