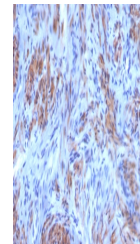


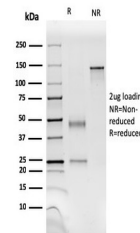
Product Datasheet

SMMHC Antibody / Smooth Muscle Myosin Heavy Chain (orb1825322)

Description	Smooth muscle myosin heavy chain (SM-MHC) is a cytoplasmic structural protein, which is a major comp...
Species/Host	Mouse
Reactivity	Human
Conjugation	Unconjugated
Tested Applications	FACS, IF, IHC-P
Immunogen	Crude human uterus extract was used as the immunogen for the SMMHC antibody.
Storage	Aliquot the SMMHC antibody and store frozen at -20°C or colder. Avoid repeated freeze-thaw cycles.
Note	For research use only
Formula	1 mg/ml in 1X PBS; BSA free, sodium azide free
Isotype	Mouse IgG1, kappa
Clonality	Monoclonal
Uniprot ID	P35749
Hazard Information	This SMMHC antibody is available for research use only.
Dilution Range	Flow cytometry: 0.5-1ug/million cells, Immunofluorescence: 0.5-1ug/ml, Immunohistochemistry (FFPE): 1-2ug/ml for 30 minutes at RT
Expiration Date	12 months from date of receipt.



IHC staining of FFPE human uterus tissue...



SDS-PAGE analysis of purified, BSA-free ...