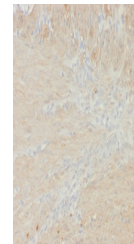


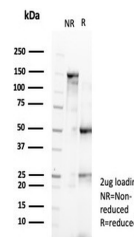
## Product Datasheet

# SMMHC Antibody / Smooth Muscle Myosin Heavy Chain (orb1825320)

|                            |  |
|----------------------------|--|
| <b>Description</b>         | Smooth muscle myosin heavy chain (SM-MHC) is a cytoplasmic structural protein, which is a major comp...        |
| <b>Species/Host</b>        | Mouse  |
| <b>Reactivity</b>          | Human  |
| <b>Conjugation</b>         | Unconjugated   |
| <b>Tested Applications</b> | IHC-P  |
| <b>Immunogen</b>           | Recombinant full-length human protein was used as the immunogen for the recombinant MYH11 antibody.            |
| <b>Storage</b>             | Aliquot the recombinant MYH11 antibody and store frozen at -20°C or colder. Avoid repeated freeze-thaw cycles. |
| <b>Note</b>                | For research use only  |
| <b>Formula</b>             | 0.2 mg/ml in 1X PBS with 0.1 mg/ml BSA (US sourced), 0.05% sodium azide  |
| <b>Isotype</b>             | Mouse IgG1, kappa  |
| <b>Clonality</b>           | Recombinant  |
| <b>Uniprot ID</b>          | <b>P35749</b>  |
| <b>Hazard Information</b>  | This recombinant MYH11 antibody is available for research use only.  |
| <b>Dilution Range</b>      | Immunohistochemistry (FFPE): 1-2ug/ml for 30 minutes at RT   |
| <b>Expiration Date</b>     | 12 months from date of receipt.  |



IHC staining of FFPE colon smooth muscle...



SDS-PAGE analysis of purified, BSA-free ...