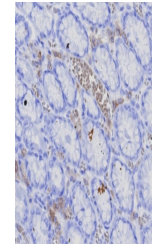


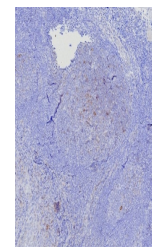
Product Datasheet

BCMA Antibody / CD269 / TNFRSF17 (orb1825314)

Description	The B cell maturation protein (BCMA) is a type I integral membrane protein that belongs to the tumor...
Species/Host	Rabbit
Reactivity	Human
Conjugation	Unconjugated
Tested Applications	ELISA, IHC-P
Immunogen	A recombinant human protein fragment (within amino acids 1-184) was used as the immunogen for the recombinant BCMA antibody.
Storage	Aliquot the recombinant BCMA antibody and store frozen at -20°C or colder. Avoid repeated freeze-thaw cycles.
Note	For research use only
Formula	0.2 mg/ml in 1X PBS with 0.1 mg/ml BSA (US sourced), 0.05% sodium azide
Isotype	Rabbit IgG, kappa
Clonality	Recombinant
Uniprot ID	Q02223
Hazard Information	This recombinant BCMA antibody is available for research use only.
Dilution Range	ELISA (Order BSA-free format for coating), Immunohistochemistry (FFPE): 1-2ug/ml for 30 minutes at RT
Expiration Date	12 months from date of receipt.



IHC staining of FFPE human stomach (corp...



IHC staining of FFPE human tonsil tissue...