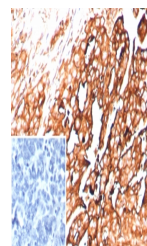


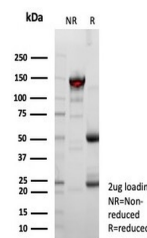
Product Datasheet

Mesothelin Antibody / MSLN (orb1825295)

| | |
|----------------------------|---|
| Description | Mesothelin is a 40kDa glycosyl-phosphatidylinositol-anchored glycoprotein cleaved from a 69kDa precu... |
| Species/Host | Mouse |
| Reactivity | Human |
| Conjugation | Unconjugated |
| Tested Applications | IHC-P |
| Immunogen | A recombinant partial protein sequence (within amino acids 273-407) from the human protein was used as the immunogen for the recombinant MSLN antibody. |
| Storage | Aliquot the recombinant MSLN antibody and store frozen at -20°C or colder. Avoid repeated freeze-thaw cycles. |
| Note | For research use only |
| Formula | 1 mg/ml in 1X PBS; BSA free, sodium azide free |
| Isotype | Mouse IgG2b, kappa |
| Clonality | Recombinant |
| Uniprot ID | Q13421 |
| Hazard Information | This recombinant MSLN antibody is available for research use only. |
| Dilution Range | Immunohistochemistry (FFPE): 1-2ug/ml for 30 minutes at RT |
| Expiration Date | 12 months from date of receipt. |



IHC staining of FFPE human ovarian cancer...



SDS-PAGE analysis of purified, BSA-free ...