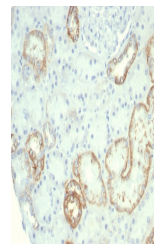


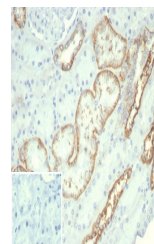
## Product Datasheet

### Cadherin 16 Antibody (orb1825274)

<b>Description</b>	This mAb recognizes a protein of 130kDa, identified as Ksp-cadherin. Cadherins form a superfamily of...
<b>Species/Host</b>	Mouse
<b>Reactivity</b>	Human
<b>Conjugation</b>	Unconjugated
<b>Tested Applications</b>	IHC-P
<b>Immunogen</b>	Recombinant human full-length protein was used as the immunogen for the recombinant CDH16 antibody.
<b>Storage</b>	Aliquot the recombinant CDH16 antibody and store frozen at -20°C or colder. Avoid repeated freeze-thaw cycles.
<b>Note</b>	For research use only
<b>Formula</b>	1 mg/ml in 1X PBS; BSA free, sodium azide free
<b>Isotype</b>	Mouse IgG1, kappa
<b>Clonality</b>	Recombinant
<b>Uniprot ID</b>	<b>075309</b>
<b>Hazard Information</b>	This recombinant CDH16 antibody is available for research use only.
<b>Dilution Range</b>	Immunohistochemistry (FFPE): 1-2ug/ml for 30 minutes at RT
<b>Expiration Date</b>	12 months from date of receipt.



IHC staining of FFPE human kidney tissue...



IHC staining of FFPE human kidney tissue...