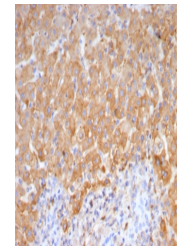


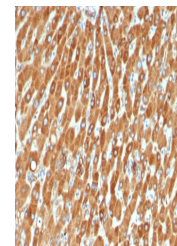
Product Datasheet

Haptoglobin Antibody (orb1825251)

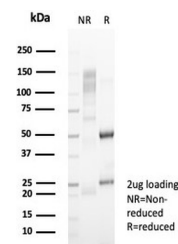
Description	Haptoglobin (Hp) is a blood plasma protein that functions to bind free Hemoglobin that has been rele...
Species/Host	Mouse
Reactivity	Human
Conjugation	Unconjugated
Tested Applications	IHC-P
Immunogen	A recombinant partial protein sequence (within amino acids 100-250) from the human protein was used as the immunogen for the Haptoglobin antibody.
Storage	Aliquot the Haptoglobin antibody and store frozen at -20°C or colder. Avoid repeated freeze-thaw cycles.
Note	For research use only
Formula	0.2 mg/ml in 1X PBS with 0.1 mg/ml BSA (US sourced), 0.05% sodium azide
Isotype	Mouse IgG1, kappa
Clonality	Monoclonal
Uniprot ID	P00738
Hazard Information	This Haptoglobin antibody is available for research use only.
Dilution Range	Immunohistochemistry (FFPE): 1-2ug/ml for 30 minutes at RT
Expiration Date	12 months from date of receipt.



IHC staining of FFPE human hepatocellular carcinoma tissue



IHC staining of FFPE human liver tissue



SDS-PAGE analysis of purified, BSA-free ...