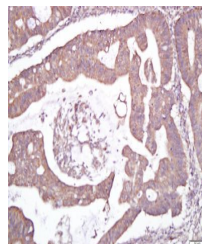


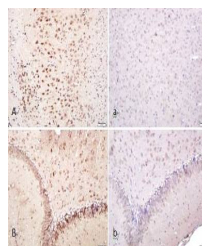
Product Datasheet

CELSR1 antibody (orb182525)

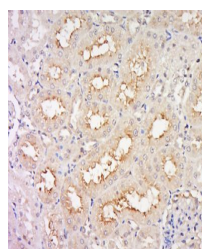
Description	CELSR1 antibody
Species/Host	Rabbit
Reactivity	Human, Rat
Conjugation	Unconjugated
Tested Applications	IF, IHC-Fr, IHC-P
Immunogen	KLH conjugated synthetic peptide derived from human CELSR1 (751-850/3014 aa)
Target	CELSR1
Preservatives	0.01M TBS(pH7.4) with 1% rAlbumin, 0.03% Proclin300 and 50% Glycerol.
Form/Appearance	Liquid
Concentration	1mg/ml
Storage	Shipped at 4°C. Store at -20 °C for one year. Avoid repeated freeze/thaw cycles.
Note	For research use only
Isotype	IgG
Clonality	Polyclonal
MW	327 kDa
Uniprot ID	Q9NYQ6
Dilution Range	IHC-P=1:100-500, IHC-F=1:100-500, IF=1:100-500, ICC=1:100-500
Expiration Date	12 months from date of receipt.



Immunohistochemical staining of human ce...



Immunohistochemical staining of rat brai...



Immunohistochemical staining of rat kidn...