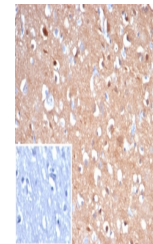


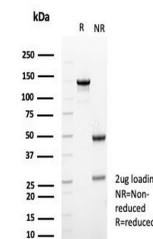
Product Datasheet

Beta Tubulin Antibody / TUBB3 (orb1825231)

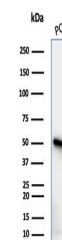
Description	This gene encodes a class III member of the beta tubulin protein family. Beta tubulins are one of tw...
Species/Host	Mouse
Reactivity	Human
Conjugation	Unconjugated
Tested Applications	IHC-P, WB
Immunogen	A recombinant partial protein sequence (within amino acids 250-450) from the human protein was used as the immunogen for the recombinant TUBB3 antibody.
Storage	Aliquot the recombinant TUBB3 antibody and store frozen at -20°C or colder. Avoid repeated freeze-thaw cycles.
Note	For research use only
Formula	0.2 mg/ml in 1X PBS with 0.1 mg/ml BSA (US sourced), 0.05% sodium azide
Isotype	Mouse IgG1, kappa
Clonality	Recombinant
Uniprot ID	Q13509
Hazard Information	This recombinant TUBB3 antibody is available for research use only.
Dilution Range	Western blot: 1-2ug/ml, Immunohistochemistry (FFPE): 1-2ug/ml for 30 minutes at RT
Expiration Date	12 months from date of receipt.



IHC staining of FFPE human brain tissue ...



SDS-PAGE analysis of purified, BSA-free ...



Western blot testing of human PC3 cell l...