

Product Datasheet

Cytokeratin 14 Antibody / CK14 / KRT14 (orb1825209)

Description Cytokeratin 14 is a member of the type I keratin family of intermediate filament proteins. It always...

Species/Host Rabbit

Reactivity Human

Conjugation Unconjugated

Tested Applications IHC-P

Immunogen A recombinant human KRT14 fragment (within amino acids 350-472) was used as the immunogen for the Cytokeratin 14 antibody.

Storage Aliquot the Cytokeratin 14 antibody and store frozen at -20°C or colder. Avoid repeated freeze-thaw cycles.

Note For research use only

Formula 0.2 mg/ml in 1X PBS with 0.1 mg/ml BSA (US sourced), 0.05% sodium azide

Isotype Rabbit IgG, kappa

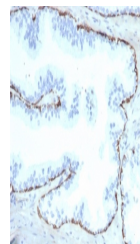
Clonality Recombinant

Uniprot ID **P02533**

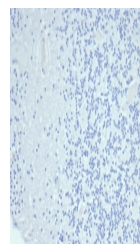
Hazard Information This Cytokeratin 14 antibody is available for research use only.

Dilution Range Immunohistochemistry (FFPE): 1-2ug/ml for 30 minutes at RT

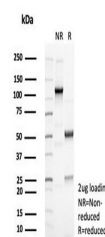
Expiration Date 12 months from date of receipt.



IHC staining of FFPE human prostate tiss...



Negative control: IHC testing of FFPE hu...



SDS-PAGE analysis of purified, BSA-free ...