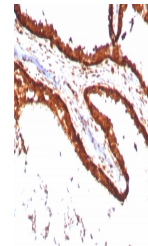


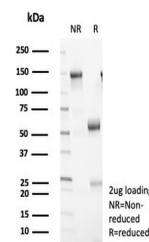
Product Datasheet

14-3-3 epsilon Antibody / YWHAE (orb1825192)

Description	Adapter protein implicated in the regulation of a large spectrum of both general and specialized sig...
Species/Host	Rabbit
Reactivity	Human
Conjugation	Unconjugated
Tested Applications	IHC-P
Immunogen	Recombinant human full-length protein was used as the immunogen for the recombinant 14-3-3E antibody.
Storage	Aliquot the recombinant 14-3-3E antibody and store frozen at -20°C or colder. Avoid repeated freeze-thaw cycles.
Note	For research use only
Formula	0.2 mg/ml in 1X PBS with 0.1 mg/ml BSA (US sourced), 0.05% sodium azide
Isotype	Rabbit IgG, kappa
Clonality	Recombinant
Uniprot ID	P62258
Hazard Information	This recombinant 14-3-3E antibody is available for research use only.
Dilution Range	Immunohistochemistry (FFPE): 1-2ug/ml for 30 minutes at RT
Expiration Date	12 months from date of receipt.



IHC staining of FFPE human prostate carc...



SDS-PAGE analysis of purified, BSA-free ...