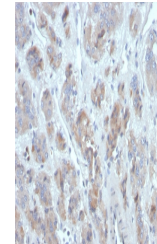


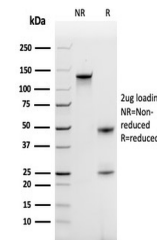
Product Datasheet

PARC Antibody / CCL18 (orb1825189)

Description	Chemokines are members of a superfamily of small inducible, secreted, proinflammatory cytokines. Mem...
Species/Host	Mouse
Reactivity	Human
Conjugation	Unconjugated
Tested Applications	IHC-P
Immunogen	A recombinant partial protein sequence (within amino acids 1-89) from the human protein was used as the immunogen for the CCL18 antibody.
Storage	Aliquot the CCL18 antibody and store frozen at -20°C or colder. Avoid repeated freeze-thaw cycles.
Note	For research use only
Formula	0.2 mg/ml in 1X PBS with 0.1 mg/ml BSA (US sourced), 0.05% sodium azide
Isotype	Mouse IgG
Clonality	Monoclonal
Uniprot ID	P55774
Hazard Information	This CCL18 antibody is available for research use only.
Dilution Range	Immunohistochemistry (FFPE): 1-2ug/ml for 30 minutes at RT
Expiration Date	12 months from date of receipt.



IHC staining of FFPE human adrenal gland...



SDS-PAGE analysis of purified, BSA-free ...