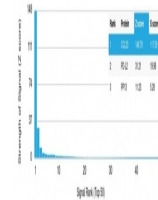


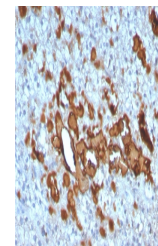
Product Datasheet

CCL23 Antibody / MPIF-1 (orb1825186)

Description	Small inducible cytokine A23 precursor (CCL23), also called CK-b-8 and Myeloid Progenitor Inhibitory...
Species/Host	Mouse
Reactivity	Human
Conjugation	Unconjugated
Tested Applications	IHC-P
Immunogen	A recombinant partial protein sequence (within amino acids 1-120) from the human protein was used as the immunogen for the CCL23 antibody.
Storage	Aliquot the Myeloid Progenitor Inhibitory Factor 1 antibody and store frozen at -20°C or colder. Avoid repeated freeze-thaw cycles.
Note	For research use only
Formula	0.2 mg/ml in 1X PBS with 0.1 mg/ml BSA (US sourced), 0.05% sodium azide
Isotype	Mouse IgG2, kappa
Clonality	Monoclonal
Uniprot ID	P55773
Hazard Information	This CCL23 antibody is available for research use only.
Dilution Range	Immunohistochemistry (FFPE): 1-2ug/ml for 30 minutes at RT
Expiration Date	12 months from date of receipt.



Analysis of a HuProt (TM) microarray con...



IHC staining of FFPE human adrenal gland...