
Product Datasheet

**HER2 Antibody / ErbB2 / Extracellular region
(orb1825180)**

Description

Recognizes a protein of 185kDa, which is identified


Species/Host

Mouse

Reactivity

Human

Conjugation

Unconjugated

Tested Applications

IHC-P

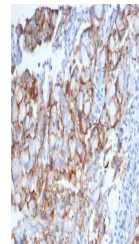
IHC staining of FFPE human breast carcin...

Immunogen

Recombinant protein encoding the extracellular domain of the human protein was used as the immunogen for the recombinant ErbB2 antibody.

Storage

Aliquot the recombinant ErbB2 antibody and store frozen at -20°C or colder. Avoid repeated freeze-thaw cycles.


Note

For research use only

Formula

0.2 mg/ml in 1X PBS with 0.1 mg/ml BSA (US sourced), 0.05% sodium azide

IHC staining of FFPE human breast carcin...

Isotype

Mouse IgG2b, kappa

Clonality

Recombinant

Uniprot ID

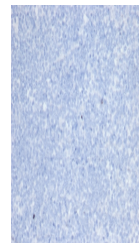
P04626

Hazard Information

This recombinant ErbB2 antibody is available for research use only.

Dilution Range

Immunohistochemistry (FFPE): 1-2ug/ml for 30 minutes at RT



Negative control: IHC testing of FFPE hu...

Expiration Date

12 months from date of receipt.