

---

## Product Datasheet

**HER2 Antibody / ErbB2 / Extracellular region  
(orb1825178)**

**Description**

Recognizes a protein of 185kDa, which is identified



**Species/Host**

Mouse

**Reactivity**

Human

**Conjugation**

Unconjugated

**Tested Applications**

IHC-P

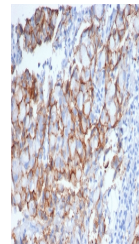
IHC staining of FFPE human breast carcin...

**Immunogen**

Recombinant protein encoding the extracellular domain of the human protein was used as the immunogen for the recombinant ErbB2 antibody.

**Storage**

Aliquot the recombinant ErbB2 antibody and store frozen at -20°C or colder. Avoid repeated freeze-thaw cycles.



**Note**

For research use only

**Formula**

1 mg/ml in 1X PBS; BSA free, sodium azide free

**Isotype**

Mouse IgG2b, kappa

IHC staining of FFPE human breast carcin...

**Clonality**

Recombinant

**Uniprot ID**

**P04626**

**Hazard Information**

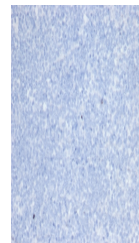
This recombinant ErbB2 antibody is available for research use only.

**Dilution Range**

Immunohistochemistry (FFPE): 1-2ug/ml for 30 minutes at RT

**Expiration Date**

12 months from date of receipt.



Negative control: IHC testing of FFPE hu...