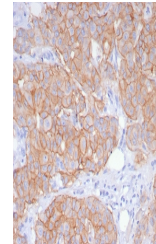


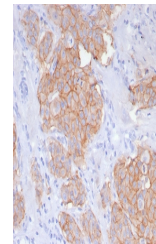
Product Datasheet

HER2 Antibody / ErbB2 (orb1825175)

Description	C-erbB-2/HER-2 is a member of the EGFR family. This mAb is specific and shows minimal cross-reaction...
Species/Host	Rabbit
Reactivity	Human
Conjugation	Unconjugated
Tested Applications	FACS, IF, IHC-P
Immunogen	A recombinant partial protein sequence (within amino acids 1055-1255) from the human protein was used as the immunogen for the recombinant HER2 antibody.
Storage	Aliquot the recombinant HER2 antibody and store frozen at -20°C or colder. Avoid repeated freeze-thaw cycles.
Note	For research use only
Formula	1 mg/ml in 1X PBS; BSA free, sodium azide free
Isotype	Rabbit IgG, kappa
Clonality	Recombinant
Uniprot ID	P04626
Hazard Information	This recombinant HER2 antibody is available for research use only.
Dilution Range	Flow cytometry: 1-2ug/million cells, Immunofluorescence: 1-2ug/ml, Immunohistochemistry (FFPE): 1-2ug/ml for 30 minutes at RT
Expiration Date	12 months from date of receipt.



IHC staining of FFPE human breast carcin...



IHC staining of FFPE human breast carcin...