

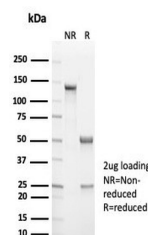
Product Datasheet

Cytokeratin 14 Antibody / CK14 / KRT14 (orb1825123)

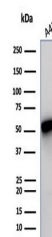
| | |
|----------------------------|----------------------------------------------------------------------------------------------------------------------------------------|
| Description | Cytokeratin 14 is a member of the type I keratin family of intermediate filament proteins. It always... |
| Species/Host | Rabbit |
| Reactivity | Human |
| Conjugation | Unconjugated |
| Tested Applications | IHC-P, WB |
| Immunogen | A recombinant human KRT14 fragment (within amino acids 350-472) was used as the immunogen for the recombinant Cytokeratin 14 antibody. |
| Storage | Aliquot the recombinant Cytokeratin 14 antibody and store frozen at -20°C or colder. Avoid repeated freeze-thaw cycles. |
| Note | For research use only |
| Formula | 0.2 mg/ml in 1X PBS with 0.1 mg/ml BSA (US sourced), 0.05% sodium azide |
| Isotype | Rabbit IgG, kappa |
| Clonality | Recombinant |
| Uniprot ID | P02533 |
| Hazard Information | This recombinant Cytokeratin 14 antibody is available for research use only. |
| Dilution Range | Western blot: 1-2ug/ml, Immunohistochemistry (FFPE): 1-2ug/ml for 30 minutes at RT |
| Expiration Date | 12 months from date of receipt. |



IHC staining of FFPE human prostate tiss...



SDS-PAGE analysis of purified, BSA-free ...



Western blot testing of human A431 cell ...