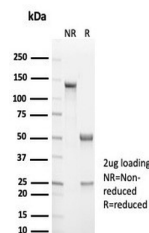


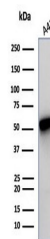
Product Datasheet

Cytokeratin 14 Antibody / CK14 / KRT14 (orb1825122)

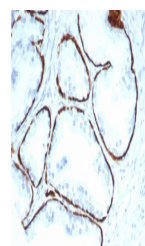
Description	Cytokeratin 14 is a member of the type I keratin family of intermediate filament proteins. It always...
Species/Host	Rabbit
Reactivity	Human
Conjugation	Unconjugated
Tested Applications	IHC-P, WB
Immunogen	A recombinant human KRT14 fragment (within amino acids 350-472) was used as the immunogen for the recombinant Cytokeratin 14 antibody.
Storage	Aliquot the recombinant Cytokeratin 14 antibody and store frozen at -20°C or colder. Avoid repeated freeze-thaw cycles.
Note	For research use only
Formula	0.2 mg/ml in 1X PBS with 0.1 mg/ml BSA (US sourced), 0.05% sodium azide
Isotype	Rabbit IgG, kappa
Clonality	Recombinant
Uniprot ID	P02533
Hazard Information	This recombinant Cytokeratin 14 antibody is available for research use only.
Dilution Range	Western blot: 1-2ug/ml, Immunohistochemistry (FFPE): 1-2ug/ml for 30 minutes at RT
Expiration Date	12 months from date of receipt.



SDS-PAGE analysis of purified, BSA-free ...



Western blot testing of human A431 cell ...



IHC staining of FFPE human prostate tiss...