

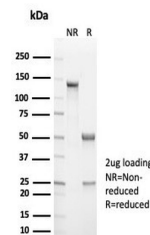
## Product Datasheet

# Cytokeratin 14 Antibody / CK14 / KRT14 (orb1825121)

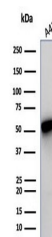
<b>Description</b>	Cytokeratin 14 is a member of the type I keratin family of intermediate filament proteins. It always...
<b>Species/Host</b>	Rabbit
<b>Reactivity</b>	Human
<b>Conjugation</b>	Unconjugated
<b>Tested Applications</b>	IHC-P, WB
<b>Immunogen</b>	A recombinant human KRT14 fragment (within amino acids 350-472) was used as the immunogen for the recombinant Cytokeratin 14 antibody.
<b>Storage</b>	Aliquot the recombinant Cytokeratin 14 antibody and store frozen at -20°C or colder. Avoid repeated freeze-thaw cycles.
<b>Note</b>	For research use only
<b>Formula</b>	1 mg/ml in 1X PBS; BSA free, sodium azide free
<b>Isotype</b>	Rabbit IgG, kappa
<b>Clonality</b>	Recombinant
<b>Uniprot ID</b>	<b>P02533</b>
<b>Hazard Information</b>	This recombinant Cytokeratin 14 antibody is available for research use only.
<b>Dilution Range</b>	Western blot: 1-2ug/ml, Immunohistochemistry (FFPE): 1-2ug/ml for 30 minutes at RT
<b>Expiration Date</b>	12 months from date of receipt.



IHC staining of FFPE human prostate tiss...



SDS-PAGE analysis of purified, BSA-free ...



Western blot testing of human A431 cell ...