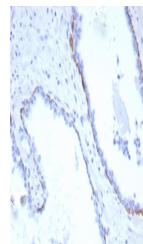


Product Datasheet

KRT17 Antibody / Cytokeratin 17 (orb1825112)

Description	Cytokeratin 17 (CK17) is normally expressed in the basal cells of complex epithelia but not in strat...
Species/Host	Rabbit
Reactivity	Human
Conjugation	Unconjugated
Tested Applications	IHC-P
Immunogen	A recombinant fragment of the human protein was used as the immunogen for the recombinant Cytokeratin 17 antibody.
Storage	Aliquot the recombinant Cytokeratin 17 antibody and store frozen at -20°C or colder. Avoid repeated freeze-thaw cycles.
Note	For research use only
Formula	1 mg/ml in 1X PBS; BSA free, sodium azide free
Isotype	Rabbit IgG, kappa
Clonality	Recombinant
Uniprot ID	Q04695
Hazard Information	This recombinant Cytokeratin 17 antibody is available for research use only.
Dilution Range	Immunohistochemistry (FFPE): 1-2ug/ml for 30 minutes at RT
Expiration Date	12 months from date of receipt.



IHC staining of FFPE human prostate carc...