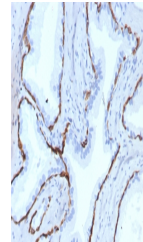


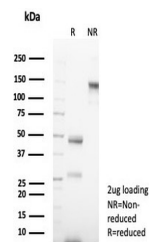
Product Datasheet

Cytokeratin 14 Antibody / CK14 / KRT14 (orb1825106)

Description	Cytokeratin 14 is a member of the type I keratin family of intermediate filament proteins. It always...
Species/Host	Rabbit
Reactivity	Human
Conjugation	Unconjugated
Tested Applications	IHC-P
Immunogen	A recombinant human KRT14 fragment (within amino acids 272-472) was used as the immunogen for the recombinant Keratin 14 antibody.
Storage	Aliquot the recombinant Keratin 14 antibody and store frozen at -20°C or colder. Avoid repeated freeze-thaw cycles.
Note	For research use only
Formula	1 mg/ml in 1X PBS; BSA free, sodium azide free
Isotype	Rabbit IgG, kappa
Clonality	Recombinant
Uniprot ID	P02533
Hazard Information	This recombinant Keratin 14 antibody is available for research use only.
Dilution Range	Immunohistochemistry (FFPE): 1-2ug/ml for 30 minutes at RT
Expiration Date	12 months from date of receipt.



IHC staining of FFPE human prostate tiss...



SDS-PAGE analysis of purified, BSA-free ...