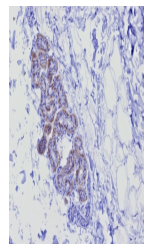


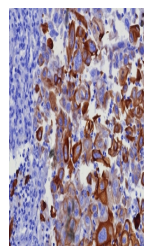
Product Datasheet

KRT17 Antibody / Cytokeratin 17 (orb1825102)

Description	Cytokeratin 17 is normally expressed in the basal cells of complex epithelia but not in stratified o...
Species/Host	Rabbit
Reactivity	Human
Conjugation	Unconjugated
Tested Applications	IHC-P
Immunogen	A recombinant fragment of human KRT17 protein was used as the immunogen for the recombinant Keratin 17 antibody.
Storage	Aliquot the recombinant Keratin 17 antibody and store frozen at -20°C or colder. Avoid repeated freeze-thaw cycles.
Note	For research use only
Formula	0.2 mg/ml in 1X PBS with 0.1 mg/ml BSA (US sourced), 0.05% sodium azide
Isotype	Rabbit IgG, kappa
Clonality	Recombinant
Uniprot ID	Q04695
Hazard Information	This recombinant Keratin 17 antibody is available for research use only.
Dilution Range	Immunohistochemistry (FFPE): 1-2ug/ml for 30 minutes at RT
Expiration Date	12 months from date of receipt.



IHC staining of FFPE human skin tissue w...



IHC staining of FFPE human lung adenocar...