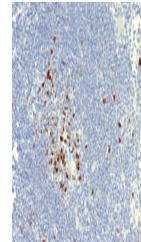


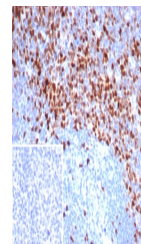
Product Datasheet

Topoisomerase II alpha Antibody / TOP2A (orb1825093)

Description	The topoisomerase II-Alpha isoform is a 170kDa nuclear protein and plays an important role in DNA sy...
Species/Host	Rabbit
Reactivity	Canine, Human
Conjugation	Unconjugated
Tested Applications	IHC-P
Immunogen	A recombinant partial protein sequence (within amino acids 1431-1531) from the human protein was used as the immunogen for the Topoisomerase II alpha antibody.
Storage	Aliquot the Topoisomerase II alpha antibody and store frozen at -20°C or colder. Avoid repeated freeze-thaw cycles.
Note	For research use only
Formula	0.2 mg/ml in 1X PBS with 0.1 mg/ml BSA (US sourced), 0.05% sodium azide
Isotype	Rabbit IgG, kappa
Clonality	Recombinant
Uniprot ID	P11388
Hazard Information	This Topoisomerase II alpha antibody is available for research use only.
Dilution Range	Immunohistochemistry (FFPE): 1-2ug/ml for 30 minutes at RT
Expiration Date	12 months from date of receipt.



IHC staining of FFPE dog lymph node tiss...



IHC staining of FFPE human tonsil tissue...