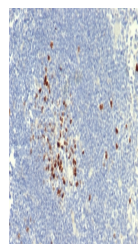


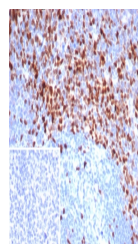
Product Datasheet

Topoisomerase II alpha Antibody / TOP2A (orb1825091)

Description	The topoisomerase II-Alpha isoform is a 170kDa nuclear protein and plays an important role in DNA sy...
Species/Host	Rabbit
Reactivity	Canine, Human
Conjugation	Unconjugated
Tested Applications	IHC-P
Immunogen	A recombinant partial protein sequence (within amino acids 1431-1531) from the human protein was used as the immunogen for the Topoisomerase II alpha antibody.
Storage	Aliquot the Topoisomerase II alpha antibody and store frozen at -20°C or colder. Avoid repeated freeze-thaw cycles.
Note	For research use only
Formula	1 mg/ml in 1X PBS; BSA free, sodium azide free
Isotype	Rabbit IgG, kappa
Clonality	Recombinant
Uniprot ID	P11388
Hazard Information	This Topoisomerase II alpha antibody is available for research use only.
Dilution Range	Immunohistochemistry (FFPE): 1-2ug/ml for 30 minutes at RT
Expiration Date	12 months from date of receipt.



IHC staining of FFPE dog lymph node tiss...



IHC staining of FFPE human tonsil tissue...