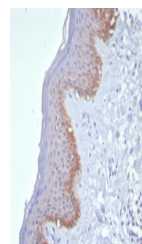


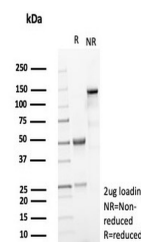
Product Datasheet

KRT15 Antibody / Cytokeratin 15 (orb1825080)

Description	Keratin 15 is a type I keratin which is expressed only in basal keratinocytes in stratified epitheli...
Species/Host	Rabbit
Reactivity	Human
Conjugation	Unconjugated
Tested Applications	IHC-P
Immunogen	Recombinant human full-length KRT15 protein was used as the immunogen for the Cytokeratin 15 antibody.
Storage	Aliquot the Cytokeratin 15 antibody and store frozen at -20°C or colder. Avoid repeated freeze-thaw cycles.
Note	For research use only
Formula	0.2 mg/ml in 1X PBS with 0.1 mg/ml BSA (US sourced), 0.05% sodium azide
Isotype	Rabbit IgG, kappa
Clonality	Recombinant
Uniprot ID	P19012
Hazard Information	This Cytokeratin 15 antibody is available for research use only.
Dilution Range	Immunohistochemistry (FFPE): 1-2ug/ml for 30 min at RT
Expiration Date	12 months from date of receipt.



IHC staining of FFPE human skin tissue w...



SDS-PAGE analysis of purified, BSA-free ...