
Product Datasheet

Pan Cytokeratin Antibody Cocktail (Acidic + Basic) (orb1825078)

Description

MonoPoly antibodies are designed by pooling

antibodies ...

Species/Host

Rabbit

Reactivity

Human

Conjugation

Unconjugated

Tested Applications

FACS, IF, IHC-P, WB

Immunogen

Recombinant fragments and/or synthetic peptides of human Cytokeratin proteins were used as the immunogen for the Pan Cytokeratin antibody.

Storage

Aliquot the Pan Cytokeratin antibody and store frozen at -20°C or colder. Avoid repeated freeze-thaw cycles.

Note

For research use only

Formula

0.2 mg/ml in 1X PBS with 0.1 mg/ml BSA (US sourced), 0.05% sodium azide

Isotype

Rabbit IgG, kappa

Clonality

Recombinant

Uniprot ID

Q7Z794, Q01546

Hazard Information

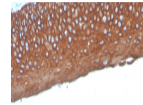
This Pan Cytokeratin antibody is available for research use only.

Dilution Range

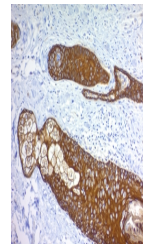
Flow cytometry: 0.5-1ug/million cells, Immunofluorescence: 1-2ug/ml, Western blot: 0.5-2ug/ml, Immunohistochemistry (FFPE): 1-2ug/ml for 30 minutes at RT

Expiration Date

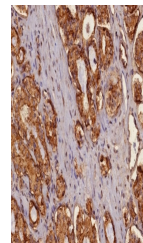
12 months from date of receipt.



IHC staining of FFPE human tonsil tissue...



IHC staining of FFPE human basal cell carcinoma...



IHC staining of FFPE human prostate carcinoma...