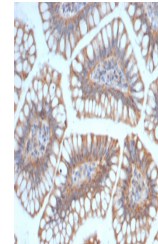


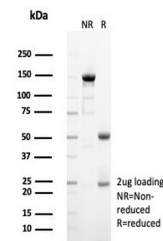
Product Datasheet

SIGLEC10 Antibody (orb1825024)

Description	Siglec-10 (sialic acid-binding Ig-like lectin 10) is a 697 amino acid protein belonging to the immun...
Species/Host	Mouse
Reactivity	Human
Conjugation	Unconjugated
Tested Applications	IHC-P
Immunogen	A recombinant partial protein sequence (within amino acids 500-697) from the human protein was used as the immunogen for the SIGLEC10 antibody.
Storage	Aliquot the SIGLEC10 antibody and store frozen at -20°C or colder. Avoid repeated freeze-thaw cycles.
Note	For research use only
Formula	0.2 mg/ml in 1X PBS with 0.1 mg/ml BSA (US sourced), 0.05% sodium azide
Isotype	Mouse IgG2, kappa
Clonality	Monoclonal
Uniprot ID	Q96LC7
Hazard Information	This SIGLEC10 antibody is available for research use only.
Dilution Range	Immunohistochemistry (FFPE): 1-2ug/ml for 30 min at RT
Expiration Date	12 months from date of receipt.



IHC staining of FFPE human small intestine...



SDS-PAGE analysis of purified, BSA-free ...