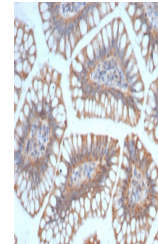


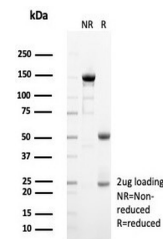
## Product Datasheet

### SIGLEC10 Antibody (orb1825023)

<b>Description</b>	Siglec-10 (sialic acid-binding Ig-like lectin 10) is a 697 amino acid protein belonging to the immun...
<b>Species/Host</b>	Mouse
<b>Reactivity</b>	Human
<b>Conjugation</b>	Unconjugated
<b>Tested Applications</b>	IHC-P
<b>Immunogen</b>	A recombinant partial protein sequence (within amino acids 500-697) from the human protein was used as the immunogen for the SIGLEC10 antibody.
<b>Storage</b>	Aliquot the SIGLEC10 antibody and store frozen at -20°C or colder. Avoid repeated freeze-thaw cycles.
<b>Note</b>	For research use only
<b>Formula</b>	0.2 mg/ml in 1X PBS with 0.1 mg/ml BSA (US sourced), 0.05% sodium azide
<b>Isotype</b>	Mouse IgG2, kappa
<b>Clonality</b>	Monoclonal
<b>Uniprot ID</b>	<a href="#">Q96LC7</a>
<b>Hazard Information</b>	This SIGLEC10 antibody is available for research use only.
<b>Dilution Range</b>	Immunohistochemistry (FFPE): 1-2ug/ml for 30 min at RT
<b>Expiration Date</b>	12 months from date of receipt.



IHC staining of FFPE human small intestine...



SDS-PAGE analysis of purified, BSA-free ...