
Product Datasheet

GFAP Antibody / Glial Fibrillary Acidic Protein (orb1825011)

Description

GFAP is specifically found in astroglia. GFAP is a very



Species/Host

Mouse

Reactivity

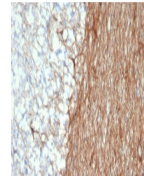
Human

Conjugation

Unconjugated

Tested Applications

IHC-P, WB



IHC staining of FFPE human brain tissue ...

Immunogen

A recombinant partial protein sequence (within amino acids 150-250) from the human protein was used as the immunogen for the GFAP antibody.

Storage

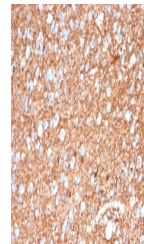
Aliquot the GFAP antibody and store frozen at -20°C or colder. Avoid repeated freeze-thaw cycles.

Note

For research use only

Formula

0.2 mg/ml in 1X PBS with 0.1 mg/ml BSA (US sourced), 0.05% sodium azide



IHC staining of FFPE human brain tissue ...

Isotype

Mouse IgG1, kappa

Clonality

Monoclonal

Uniprot ID

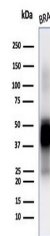
P14136

Hazard Information

This GFAP antibody is available for research use only.

Dilution Range

Western blot: 1-2ug/ml, Immunohistochemistry (FFPE): 1-2ug/ml for 30 minutes at RT



Western blot testing of human brain tiss...

Expiration Date

12 months from date of receipt.