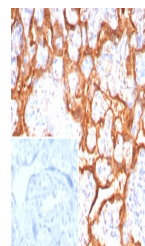


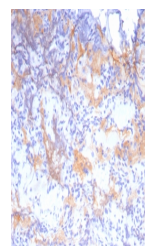
Product Datasheet

Growth Hormone Antibody / GH1 (orb1824949)

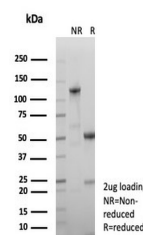
Description	Pituitary growth hormone (GH) plays a crucial role in stimulating and controlling the growth, metabo...
Species/Host	Rabbit
Reactivity	Human
Conjugation	Unconjugated
Tested Applications	IHC-P
Immunogen	Recombinant full-length human GH1 protein was used as the immunogen for the Growth Hormone antibody.
Storage	Aliquot the Growth Hormone antibody and store frozen at -20°C or colder. Avoid repeated freeze-thaw cycles.
Note	For research use only
Formula	0.2 mg/ml in 1X PBS with 0.1 mg/ml BSA (US sourced), 0.05% sodium azide
Isotype	Rabbit IgG, kappa
Clonality	Recombinant
Uniprot ID	P01241
Hazard Information	This Growth Hormone antibody is available for research use only.
Dilution Range	Immunohistochemistry (FFPE): 1-2ug/ml for 30 min at RT
Expiration Date	12 months from date of receipt.



IHC staining of FFPE human placental tis...



IHC staining of FFPE human pituitary tis...



SDS-PAGE analysis of purified, BSA-free ...