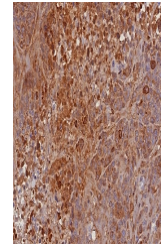


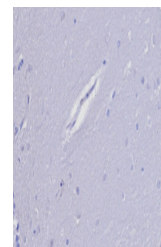
Product Datasheet

TIMP2 Antibody (orb1824946)

| | |
|----------------------------|---|
| Description | It recognizes a protein of 21kDa, identified as tissue inhibitor of metalloproteinases-2 (TIMP-2). I... |
| Species/Host | Rabbit |
| Reactivity | Human |
| Conjugation | Unconjugated |
| Tested Applications | IHC-P |
| Immunogen | A recombinant fragment of human TIMP2 protein was used as the immunogen for the TIMP2 antibody. |
| Storage | Aliquot the TIMP2 antibody and store frozen at -20°C or colder. Avoid repeated freeze-thaw cycles. |
| Note | For research use only |
| Formula | 0.2 mg/ml in 1X PBS with 0.1 mg/ml BSA (US sourced), 0.05% sodium azide |
| Isotype | Rabbit IgG, kappa |
| Clonality | Recombinant |
| Uniprot ID | P16035 |
| Hazard Information | This TIMP2 antibody is available for research use only. |
| Dilution Range | Immunohistochemistry (FFPE): 1-2ug/ml for 30 min at RT |
| Expiration Date | 12 months from date of receipt. |



IHC staining of FFPE human bladder carci...



Negative control: IHC testing of FFPE hu...