
Product Datasheet

SSTR2 Antibody / Somatostatin Receptor 2 (orb1824943)

Description

SSTRs (for somatostatin receptors) represent a

mediate t...

Species/Host

Mouse

Reactivity

Human

Conjugation

Unconjugated

Tested Applications

IHC-P

Immunogen

A recombinant partial protein sequence (within amino acids 300-500) from the human protein was used as the immunogen for the SSTR2 antibody.

Storage

Aliquot the SSTR2 antibody and store frozen at -20°C or colder. Avoid repeated freeze-thaw cycles.

Note

For research use only

Formula

0.2 mg/ml in 1X PBS with 0.1 mg/ml BSA (US sourced), 0.05% sodium azide

Isotype

Mouse IgG2b, lambda

Clonality

Monoclonal

Uniprot ID

P30874

Hazard Information

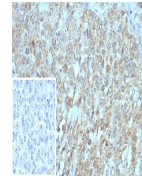
This SSTR2 antibody is available for research use only.

Dilution Range

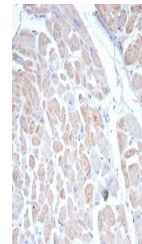
Immunohistochemistry (FFPE): 1-2ug/ml for 30 min at RT

Expiration Date

12 months from date of receipt.

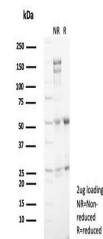


IHC staining of FFPE human pancreas tiss...



IHC staining of FFPE human heart tissue

...



SDS-PAGE analysis of purified, BSA-free ...