

---

## Product Datasheet

### SSTR2 Antibody / Somatostatin Receptor 2 (orb1824942)

**Description**

SSTRs (for somatostatin receptors) represent a

mediate t...

**Species/Host**

Mouse

**Reactivity**

Human

**Conjugation**

Unconjugated

**Tested Applications**

IHC-P

**Immunogen**

A recombinant partial protein sequence (within amino acids 300-500) from the human protein was used as the immunogen for the SSTR2 antibody.

**Storage**

Aliquot the SSTR2 antibody and store frozen at -20°C or colder. Avoid repeated freeze-thaw cycles.

**Note**

For research use only

**Formula**

0.2 mg/ml in 1X PBS with 0.1 mg/ml BSA (US sourced), 0.05% sodium azide

**Isotype**

Mouse IgG2b, lambda

**Clonality**

Monoclonal

**Uniprot ID**

**P30874**

**Hazard Information**

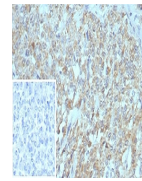
This SSTR2 antibody is available for research use only.

**Dilution Range**

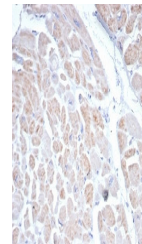
Immunohistochemistry (FFPE): 1-2ug/ml for 30 min at RT

**Expiration Date**

12 months from date of receipt.

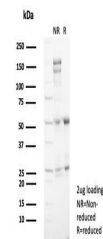


IHC staining of FFPE human pancreas tiss...



IHC staining of FFPE human heart tissue

...



SDS-PAGE analysis of purified, BSA-free ...