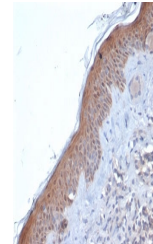


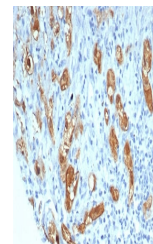
Product Datasheet

SERPINB5 Antibody / MASPIN (orb1824850)

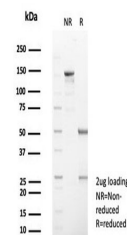
Description	Maspin/Serpinb5 is structurally a serine protease inhibitor (serpin) that was initially isolated fro...
Species/Host	Mouse
Reactivity	Human
Conjugation	Unconjugated
Tested Applications	IHC-P, WB
Immunogen	A recombinant fragment of human protein (within amino acids 1-200) was used as the immunogen for the SERPINB5 antibody.
Storage	Aliquot the SERPINB5 antibody and store frozen at -20°C or colder. Avoid repeated freeze-thaw cycles.
Note	For research use only
Formula	0.2 mg/ml in 1X PBS with 0.1 mg/ml BSA (US sourced), 0.05% sodium azide
Isotype	Mouse IgG
Clonality	Monoclonal
Uniprot ID	P36952
Hazard Information	This SERPINB5 antibody is available for research use only.
Dilution Range	Western blot: 1-2ug/ml, Immunohistochemistry (FFPE): 1-2ug/ml for 30 min at RT
Expiration Date	12 months from date of receipt.



IHC staining of FFPE human skin tissue w...



IHC staining of FFPE human lung tissue w...



SDS-PAGE analysis of purified, BSA-free ...