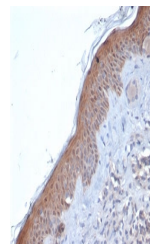


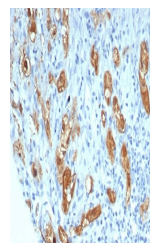
## Product Datasheet

### SERPINB5 Antibody / MASPIN (orb1824849)

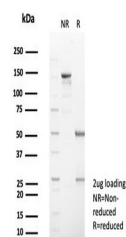
|                            |   |
|----------------------------|---|
| <b>Description</b>         | Maspin/Serpinb5 is structurally a serine protease inhibitor (serpin) that was initially isolated fro...                 |
| <b>Species/Host</b>        | Mouse   |
| <b>Reactivity</b>          | Human   |
| <b>Conjugation</b>         | Unconjugated  |
| <b>Tested Applications</b> | IHC-P, WB   |
| <b>Immunogen</b>           | A recombinant fragment of human protein (within amino acids 1-200) was used as the immunogen for the SERPINB5 antibody. |
| <b>Storage</b>             | Aliquot the SERPINB5 antibody and store frozen at -20°C or colder. Avoid repeated freeze-thaw cycles.                   |
| <b>Note</b>                | For research use only   |
| <b>Formula</b>             | 0.2 mg/ml in 1X PBS with 0.1 mg/ml BSA (US sourced), 0.05% sodium azide   |
| <b>Isotype</b>             | Mouse IgG   |
| <b>Clonality</b>           | Monoclonal  |
| <b>Uniprot ID</b>          | <b>P36952</b>   |
| <b>Hazard Information</b>  | This SERPINB5 antibody is available for research use only.  |
| <b>Dilution Range</b>      | Western blot: 1-2ug/ml, Immunohistochemistry (FFPE): 1-2ug/ml for 30 min at RT  |
| <b>Expiration Date</b>     | 12 months from date of receipt.   |



IHC staining of FFPE human skin tissue w...



IHC staining of FFPE human lung tissue w...



SDS-PAGE analysis of purified, BSA-free ...