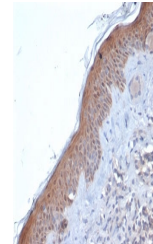


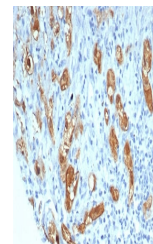
## Product Datasheet

### SERPINB5 Antibody / MASPIN (orb1824848)

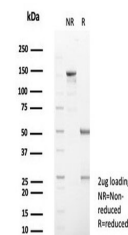
<b>Description</b>	Maspin/Serpinb5 is structurally a serine protease inhibitor (serpin) that was initially isolated fro...
<b>Species/Host</b>	Mouse
<b>Reactivity</b>	Human
<b>Conjugation</b>	Unconjugated
<b>Tested Applications</b>	IHC-P, WB
<b>Immunogen</b>	A recombinant fragment of human protein (within amino acids 1-200) was used as the immunogen for the SERPINB5 antibody.
<b>Storage</b>	Aliquot the SERPINB5 antibody and store frozen at -20°C or colder. Avoid repeated freeze-thaw cycles.
<b>Note</b>	For research use only
<b>Formula</b>	1 mg/ml in 1X PBS; BSA free, sodium azide free
<b>Isotype</b>	Mouse IgG
<b>Clonality</b>	Monoclonal
<b>Uniprot ID</b>	<b>P36952</b>
<b>Hazard Information</b>	This SERPINB5 antibody is available for research use only.
<b>Dilution Range</b>	Western blot: 1-2ug/ml, Immunohistochemistry (FFPE): 1-2ug/ml for 30 min at RT
<b>Expiration Date</b>	12 months from date of receipt.



IHC staining of FFPE human skin tissue w...



IHC staining of FFPE human lung tissue w...



SDS-PAGE analysis of purified, BSA-free ...