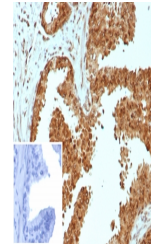


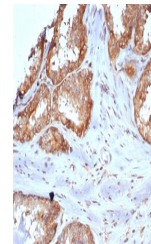
Product Datasheet

CARM1 Antibody / PRMT4 (orb1824844)

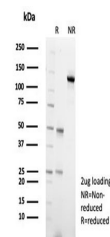
Description	CARM1 (coactivator-associated arginine methyltransferase 1), also known as protein arginine N-methyl...
Species/Host	Mouse
Reactivity	Human
Conjugation	Unconjugated
Tested Applications	IHC-P
Immunogen	A recombinant partial protein sequence (within amino acids 200-400) from the human protein was used as the immunogen for the CARM1 antibody.
Storage	Aliquot the CARM1 antibody and store frozen at -20°C or colder. Avoid repeated freeze-thaw cycles.
Note	For research use only
Formula	0.2 mg/ml in 1X PBS with 0.1 mg/ml BSA (US sourced), 0.05% sodium azide
Isotype	Mouse IgG
Clonality	Monoclonal
Uniprot ID	Q86X55
Hazard Information	This CARM1 antibody is available for research use only.
Dilution Range	Immunohistochemistry (FFPE): 1-2ug/ml for 30 min at RT
Expiration Date	12 months from date of receipt.



IHC staining of FFPE human prostate carc...



IHC staining of FFPE human prostate tiss...



SDS-PAGE analysis of purified, BSA-free ...