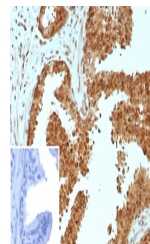


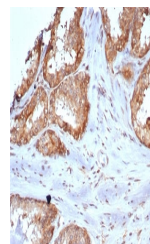
## Product Datasheet

### CARM1 Antibody / PRMT4 (orb1824842)

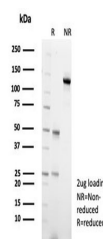
<b>Description</b>	CARM1 (coactivator-associated arginine methyltransferase 1), also known as protein arginine N-methyl...
<b>Species/Host</b>	Mouse
<b>Reactivity</b>	Human
<b>Conjugation</b>	Unconjugated
<b>Tested Applications</b>	IHC-P
<b>Immunogen</b>	A recombinant partial protein sequence (within amino acids 200-400) from the human protein was used as the immunogen for the CARM1 antibody.
<b>Storage</b>	Aliquot the CARM1 antibody and store frozen at -20°C or colder. Avoid repeated freeze-thaw cycles.
<b>Note</b>	For research use only
<b>Formula</b>	1 mg/ml in 1X PBS; BSA free, sodium azide free
<b>Isotype</b>	Mouse IgG
<b>Clonality</b>	Monoclonal
<b>Uniprot ID</b>	<a href="#">Q86X55</a>
<b>Hazard Information</b>	This CARM1 antibody is available for research use only.
<b>Dilution Range</b>	Immunohistochemistry (FFPE): 1-2ug/ml for 30 min at RT
<b>Expiration Date</b>	12 months from date of receipt.



IHC staining of FFPE human prostate carc...



IHC staining of FFPE human prostate tiss...



SDS-PAGE analysis of purified, BSA-free ...