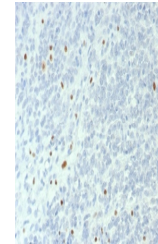


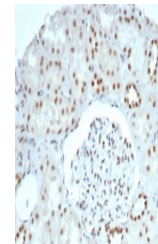
Product Datasheet

BRG1 Antibody / SMARCA4 (orb1824833)

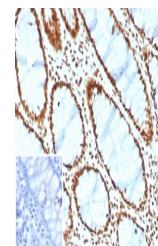
Description	The SWI-SNF complex is involved in the activation of transcription via the remodeling of nucleosome ...
Species/Host	Rabbit
Reactivity	Human
Conjugation	Unconjugated
Tested Applications	ELISA, IHC-P, WB
Immunogen	A recombinant partial protein sequence (within amino acids 200-400) from the human protein was used as the immunogen for the SMARCA4 antibody.
Storage	Aliquot the SMARCA4 antibody and store frozen at -20°C or colder. Avoid repeated freeze-thaw cycles.
Note	For research use only
Formula	1 mg/ml in 1X PBS; BSA free, sodium azide free
Isotype	Rabbit IgG, kappa
Clonality	Recombinant
Uniprot ID	P51532
Hazard Information	This SMARCA4 antibody is available for research use only.
Dilution Range	ELISA (Order BSA-free format for coating), Western blot: 1-2ug/ml, Immunohistochemistry (FFPE): 1-2ug/ml for 30 min at RT
Expiration Date	12 months from date of receipt.



IHC staining of FFPE human ovarian small...



IHC staining of FFPE human kidney tissue...



IHC staining of FFPE human colon tissue ...